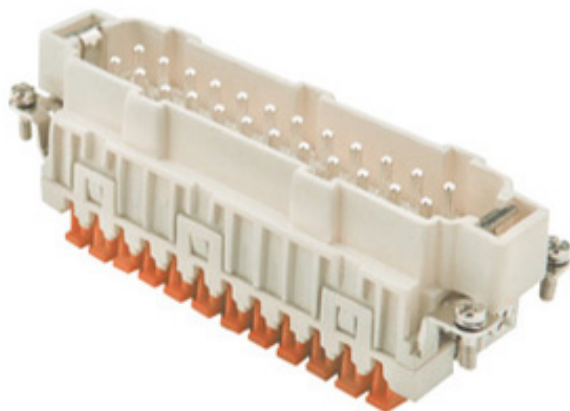







## Product Sheet

**Part Number:** CSHM 24



<b>Family</b>	inserts
<b>Version</b>	Spring connection contacts SQUICH
<b>Series</b>	CSH
<b>Product type</b>	with male contacts
<b>Model</b>	male insert
<b>Reference standard</b>	EN 61984 (2001-11)
<b>Contact type</b>	silver plated
<b>No. of poles</b>	24 poles + 
<b>Voltage (V)</b>	500V
<b>Current (A)</b>	16A (A.C./D.C.)
<b>Wire section</b>	0,14mm <sup>2</sup> - 2,5mm <sup>2</sup>
<b>Awg size</b>	26 - 14
<b>Quality mark</b>	   GOST 
<b>IP degree of protection</b>	IP20 degree of protection without enclosure; IP65, IP66, IP67, IP68 (EN 60529) and IP69K (DIN 40050 - 9) with enclosure
<b>Fixing centre distance</b>	size "104.27"

The information and the dimensions contained are not binding and may be changed without prior notice.  
The drawing's dimensions are in mm.

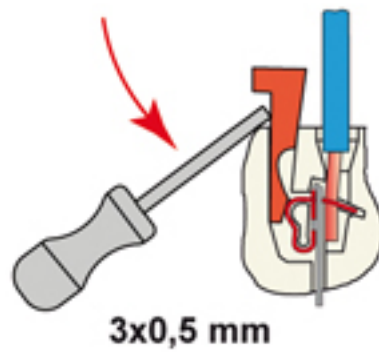
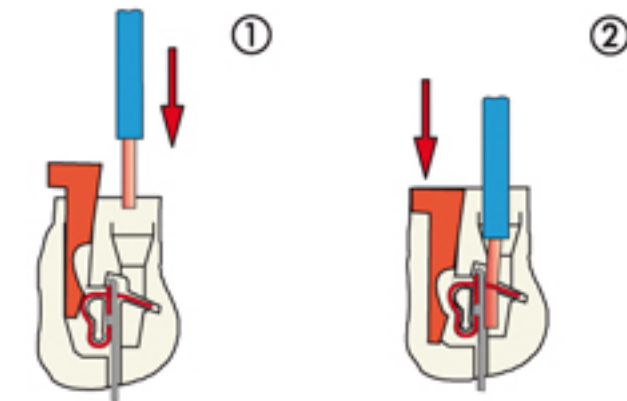
**Impulse withstand voltage** 6kV

**Pollution degree** 3

The information and the dimensions contained are not binding and may be changed without prior notice.  
The drawing's dimensions are in mm.

Notes

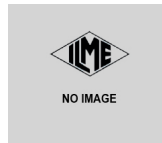
actuator button connections



Reopening

- inserts for connectors with the following sections:  
0.14 - 2.5 mm<sup>2</sup> - AWG 26 - 14
- conductors stripping length: 9...11 mm

The information and the dimensions contained are not binding and may be changed without prior notice.  
The drawing's dimensions are in mm.



CSHF/M 24

- characteristics according to EN 61984:

16A 500V 6kV 3

16A 400/690V 6kV 2

- rated voltage according to UL/CSA: 600V

- insulation resistance: > 10 GOhm

- ambient temperature limit: -40 °C ... +125 °C

- are made of self-extinguishing thermoplastic resin UL 94 V0

- mechanical life: > 500 cycles

- contact resistance: < 3 mOhm

- enclosures: size "104.27":

C-TYPE IP65/IP66

C7 IP67 stainless steel lever

V-TYPE IP65/IP66

stainless steel lever

T-TYPE IP65 insulating

JEI zinc-plated steel lever

BIG hoods

W-TYPE aggressive environments

EMC

central lever

IP68

- panel supports:

COB

The information and the dimensions contained are not binding and may be changed without prior notice.

The drawing's dimensions are in mm.